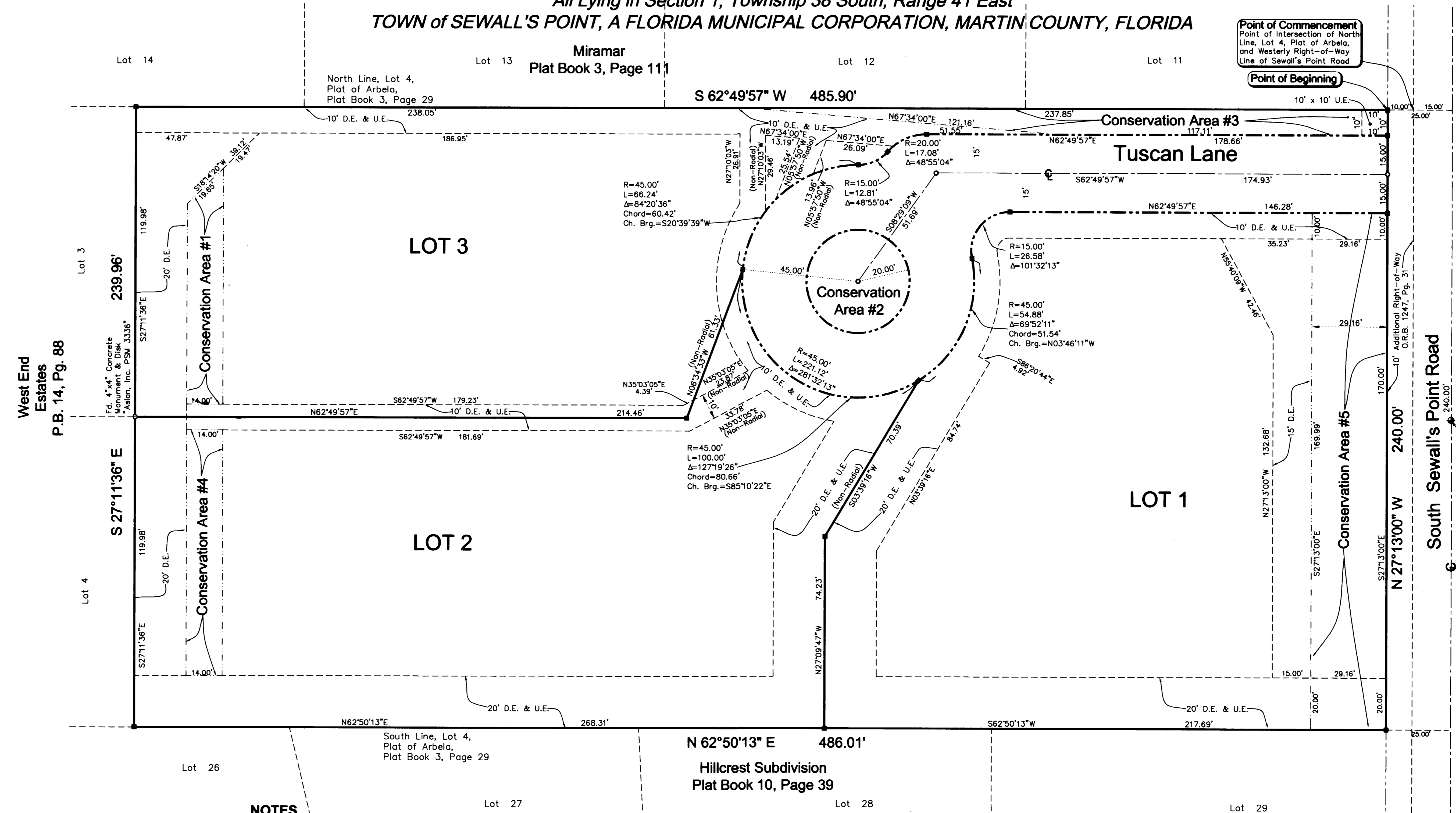
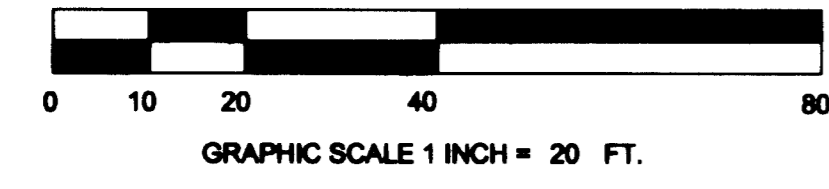


A Plat of Noni Estates

Being a Replat of a Portion of Lot 4, Plat of Arbela, as recorded in
Plat Book 3, Page 29, Public Records of Palm Beach, (now Martin) County, Florida,
Also Being a Replat of Parcel 1, Peter T. Lopilato & D. Marjorie Centrone Minor Subdivision,
as recorded in O. R. Book 1247, Page 28, Public Records of Martin County, Florida
All Lying in Section 1, Township 38 South, Range 41 East
TOWN of SEWALL'S POINT, A FLORIDA MUNICIPAL CORPORATION, MARTIN COUNTY, FLORIDA



West End Estates
P.B. 14, Pg. 88

F.d. 4"x4" Concrete Monument & Disk
Asian, Inc. P.S.M. 3336"

Site Benchmark
PK Nail & Disk "RLS 1272"
Elevation 5.55'

NOTES

1. Benchmark elevations as shown are referenced to the National Geodetic Vertical Datum of 1929 (N.G.V.D. 29), and are referenced to USC&GS Benchmark Q236, Elevation=4.104 feet.
2. Bearings shown hereon are relative to the centerline of South Sewall's Point Road, having a bearing of S 27°13'00" E.
3. Coordinates shown hereon are based upon NAD 1983/1990 Adjustment, State Plane Transverse Mercator Projection, Florida East Zone, US Survey Feet Units.
4. The National Flood Insurance Program designation as indicated on the F.E.M.A. Map Panel No. 1208500154 F, Dated October 4, 2002, Locates the parcel in Zone X (Inside 500 Year Floodplain), Zone AE, Elevation=8, and Zone AE, Elevation=9, subject to any scaling and interpolation factors associated with mapping of this accuracy.
5. Direct Ingress and Egress between Lot 1 and South Sewall's Point Road is Prohibited.

LEGEND AND ABBREVIATIONS

- o = Set P.C.P. (Permanent Control Point), a Set P.K. Nail with Disk Stamped "Asian, Inc. P.S.M. 3336".
- o = Set P.C.P. (Permanent Control Point), a Set 5/8" Iron Rod with Cap Stamped "Asian, Inc. P.S.M. 3336".
- = Set Permanent Reference Monument, a Set 4"x4" Concrete Monument with Disk Stamped "ASLAN, Inc. P.S.M. 3336".
- NGVD = National Geodetic Vertical Datum
- R. = Arc Radius
- L. = Arc Length
- Δ = Arc Included Angle
- Ch. Brg. = Arc Chord Bearing
- P.S.M. = Professional Surveyor and Mapper
- P.K. Nail = Parker-Kalon Nail
- F.E.M.A. = Federal Emergency Management Agency
- D.E. = Drainage Easement
- U.E. = Utility Easement
- C.A. = Conservation Area

NOTICE

1. This plat, as recorded in its original form in the public records, is the official depiction of the subdivided lands described hereon and will in no circumstances be supplanted in authority by any other form of the plat, whether graphic or digital. There may be additional restrictions that are not recorded on this plat that may be found in the public records of this county.

PREPARED BY: Eric B. Holly, P.S.M.

ASLAN, INC.
CONSULTANTS • PLANNERS • SURVEYORS
LAND INFORMATION SERVICES
2440 S.E. Federal Highway - Suite 700
Stuart, FL 34994 (772) 288-4880 Fax 288-0128